

## Chattogram, Bangladesh



### Key facts about the plant

- 2x612MW ultra-supercritical coal-fired power plant.
- Owner: SS Power I Ltd, China
- Contractor: SEPCOIII, China



### Key facts about the silo

- Completed in 2022
- 2 fly ash concrete silos
- H 27.9m
- Outer Ø = 15.6m
- 2650m<sup>3</sup> capacity for each storage

The Chattogram power plant is located on the banks of the Bay of Bengal, approximately 70km south of the Chattogram port city in the Banskoli sub-district of the Chattogram district, Bangladesh.

The project is being developed on a built, own and operate (BOO) model through a joint venture between S. Alam Group and SEPCOIII (Shandong TIEJUN Electric Power Engineering Company Limited), China along with HTG Development Group, China. It is a project under China's ambitious Belt and Road Initiative.

FERBECK INTERNATIONAL SA has been awarded a procurement and construction contract for two 33.2 meters-height flue-gas desulfurization by SEPCOIII, China.

The scope of work includes:

- foundation
- concrete shell
- slabs and roof







## Foundation

The foundation is made in concrete with the following size:

- 40.6m x 25m
- h 1,6m



## Concrete shell

The two outer concrete shells are made with the following size:

- 15,6m each of external diameter
- h 27,6m each

The casting is performed with a slipform operating 24/7.



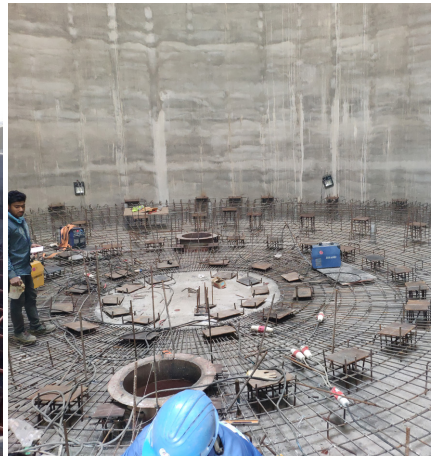




## Slabs and roof

3 slabs are installed inside each structure:

- roof slab at EL.+27m
- main slab at EL.+12.5m supported by 4 columns each, size 1.2m x 1.2m
- operating floor slab at EL.+7m



## Overview of the plant

The Chittagong power plant is a 1.32GW coal-fired power generation facility. At full capacity, Chittagong coal-fired power project is expected to generate up to 10 billion kWh of electricity a year

