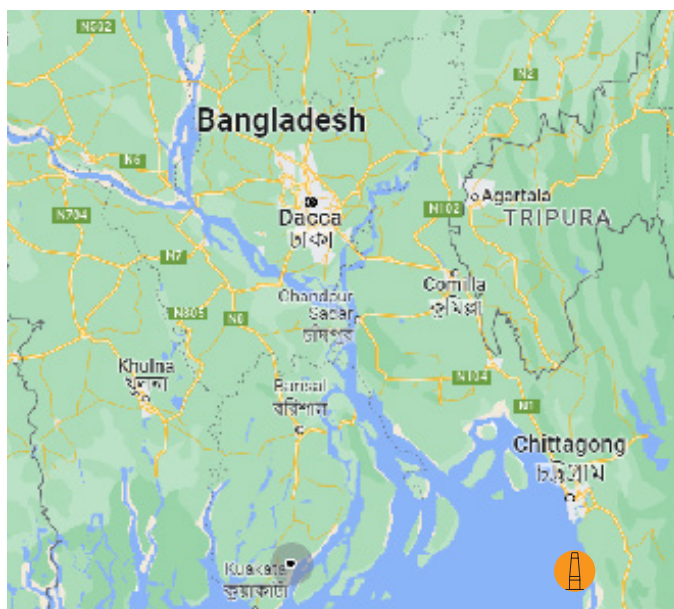




Chittagong, Bangladesh



Key facts about the plant

- 2x612MW ultra-supercritical coal-fired power plant
- Owner: SS Power I Ltd, China
- Contractor: SEPCOIII, China



Key facts about the chimney

- Completed in 2023
- Concrete chimney
- Conical and cylindrical shape
- H 275m
- Outer $\varnothing = 32\text{m}$ (bottom), 17.5m (top)
- 2 carbon steel liners, $\varnothing = 6,500\text{mm}$ each with titanium cladding

The Chittagong power plant is located on the banks of the Bay of Bengal, approximately 70km south of the Chittagong port city in the Banskoli sub-district of the Chittagong district, Bangladesh.

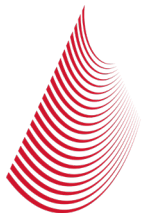
The project is being developed on a built, own and operate (BOO) model through a joint venture between S. Alam Group and SEPCOIII Electric Power Construction Corporation, China along with HTG Development Group, China. It is a project under China's ambitious Belt and Road Initiative.

FERBECK INTERNATIONAL SA has been awarded an EPC contract for one 275 meters-height concrete chimney by SEPCOIII, China.

The scope of work includes:

- foundation
- concrete shell
- outer shell coat
- steel platforms and walkways
- titanium cladding as internal protection
- all other steel elements (doors, windows...)
- access lift and ladders
- electric system (lighting, inner power supply, aircraft signalization lamps...)
- lightning protection system

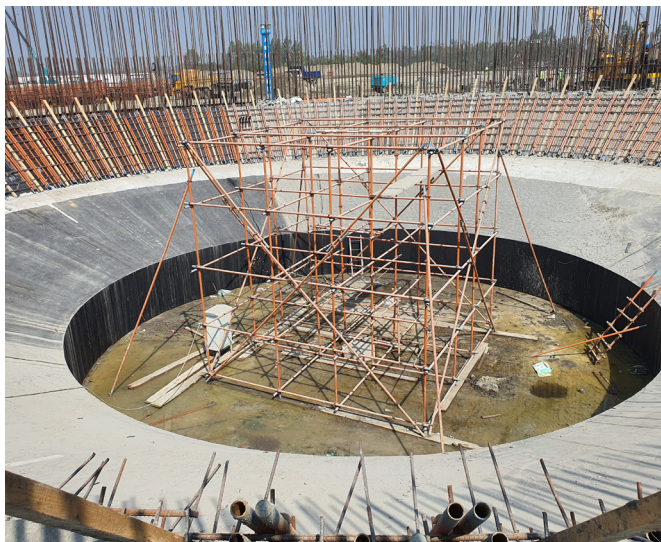
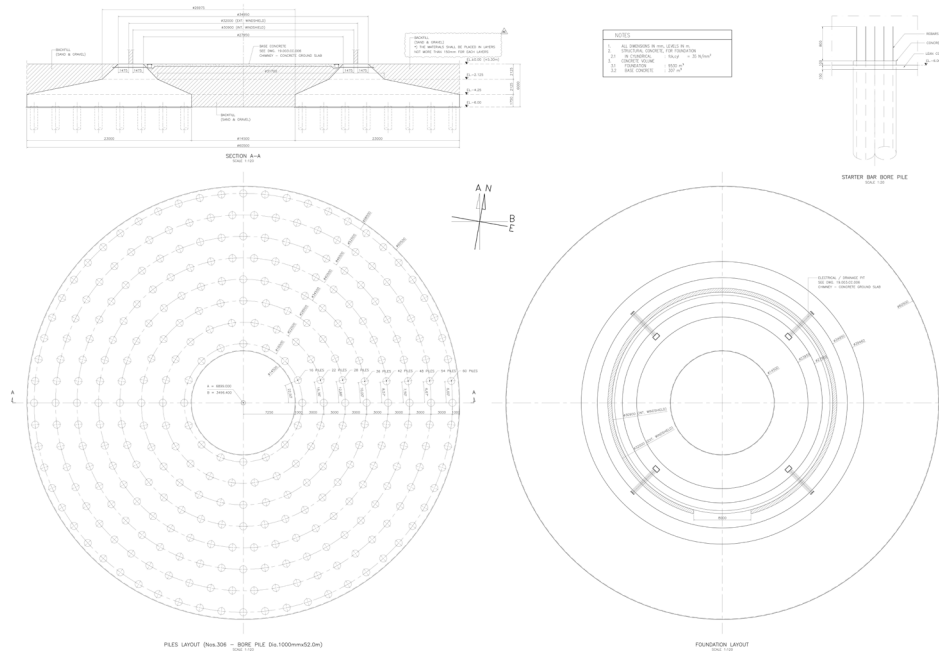




Foundation

The foundation is made of 9600m³ of concrete with the following size:

- 60.5m diameter
- h 6m at EL. -6m



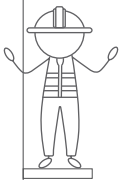


Concrete Shell

The outer concrete shell is made of 9600m³ of concrete with the following size:

- 32m (bottom), 17.5m (top)
- h 275m

The casting is performed with a slipform operating 24/7.





Platforms

3 platforms and 3 walkways are installed inside the structure:

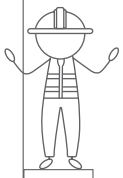
- roof platform at EL.+268.50m
- support platform at EL.+262.50m
- AWL walkway at EL.+183.58m
- guide and CEMS platform at EL.+81.03m
- expansion joint walkway at EL.+24.92m
- hopper walkway at EL.+16.72m

The structure of support platform is made of a huge steel profile for bearing the load of the suspended inner liner.



Liner

The chimney has 2 carbon steel liners $\varnothing = 6,500\text{mm}$ each with titanium cladding on internal surface.





Overview of the plant

The power plant is a 1.32GW coal-fired power generation facility. At full capacity, Chittagong coal-fired power project is expected to generate up to 10 billion kWh of electricity a year.

