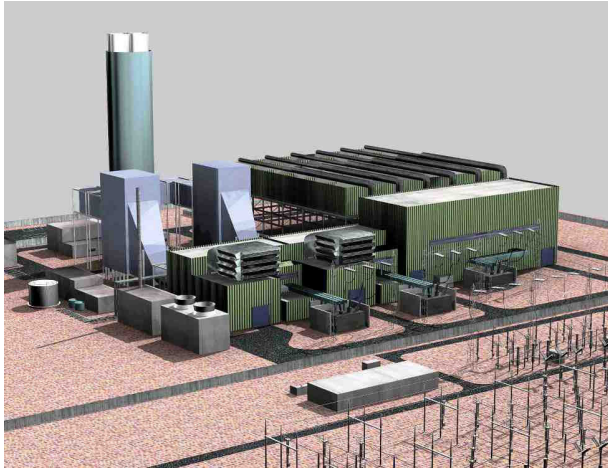




## Turano Lodigiano, Italy



### Key facts about the plant

- 2 x 265 MW, 1 x 270 MW CCGT power plant
- Owner: Sorgenia SpA
- Contractor: Ansaldo Energia SpA (AEN)



### Key facts about the chimney

- Completed in 2010
- Concrete chimney
- Hexagonal columnar shape
- H 100m
- 17.55m x 9.8m
- 2 carbon steel liners,  $\varnothing = 6,100\text{mm}$  each

Turano Lodigiano-Bertonico, is owned by Sorgenia SpA, an important private operator in the Italian market in the field of electric power and natural gas, strongly focused on environmental issues.

The plant site is a recently reclaimed industrial area that was previously occupied by an oil refinery demolished in the early 1980s, in the frame of a plan for re-qualifying the surrounding area by developing industrial and artisan sites nearby.

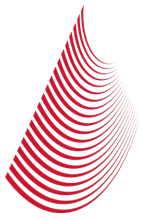
The EPC contract of Turano power plant was awarded to Ansaldo Energia, a leading international player in the power generation industry, in April 2008 and followed the realization by Sorgenia of similar plants near Termoli and Modugno in central/southern Italy.

In this power plant, FERBECK has been awarded an EPC contract of a 100 meter-high-concrete chimney by Ansaldo Energia.

The scope of work includes:

- foundation
- concrete shell
- outer shell coat
- steel platforms
- all other steel elements (doors, windows...)
- access lift and ladders
- electric system (lighting, inner power supply, aircraft signalization lamps...)
- lightning protection system

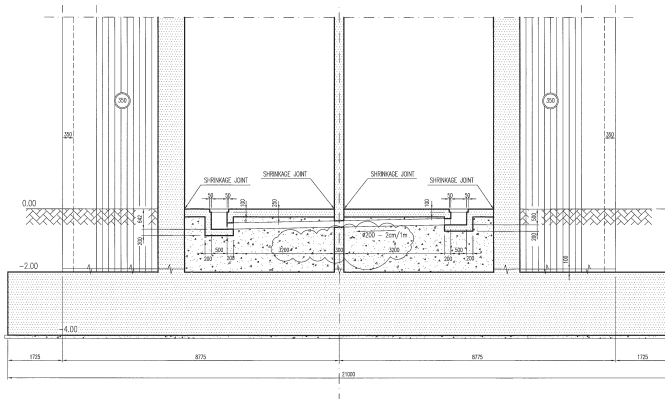




## Foundation

The foundation is made of 630m<sup>3</sup> of concrete with the following size:

- two silo areas 15m x 21m
- h 2m at EL.-4m



## Concrete shell

The outer concrete shell is made of 1,760m<sup>3</sup> of concrete with the following size:

- 17.55m x 9.8m of external dimension
- h 100m

The casting is performed with a slipform operating 24/7.





## Platforms

7 platforms are installed inside the structure:

- roof platform at EL.+97m
- platform at EL.+92m
- platform at EL.+72m
- platform at EL.+64m
- guide platform at EL.+59.5m
- AWL platform at EL.+56m
- lamp platform at EL.+30m



## Liner

The chimney has 2 bottom supported carbon steel liners with  $\varnothing = 6,100\text{mm}$  each at EL.+9.5m, externally covered by mineral rock wool.





## Overview of the plant

Turano Lodigiano-Bertonico, an 800MW power plant in northern Italy near Lodi.

